

3 Steps to the EPM Main Menu

Step 1. Assess Citrix Receiver



Citrix Installation Resources

- University Help Desk (7-6000)
- UofU Pulse Install Citrix Guidance (Linked)
- Citrix Receiver Installation via UofU website (Linked)

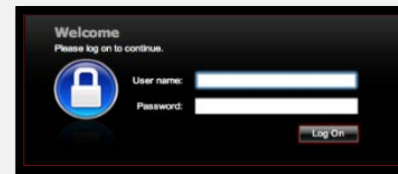
Does your computer have a compatible version of Citrix Receiver installed? Your computer should have a compatible version of Citrix Receiver installed for the EPM icon to launch properly.

Contact the Help Desk at 7-6000 with Citrix Receiver Client issues or installation assistance.

Step 2. Log into the Citrix Portal

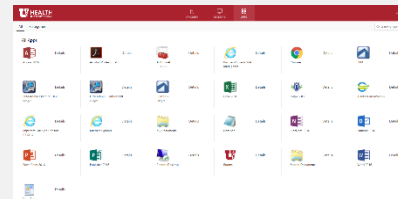
Insert Citrix Portal URL into

URL: access.utah.edu



= UNID & PWRD SAME AS CIS

Step 3. Find & Click EPM Icon



Nothing popping up after patiently waiting?
Contact the Help Desk at 7-6000

Arrival